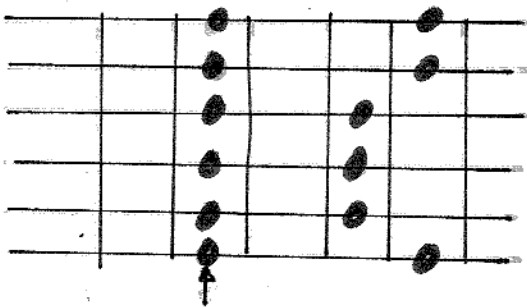


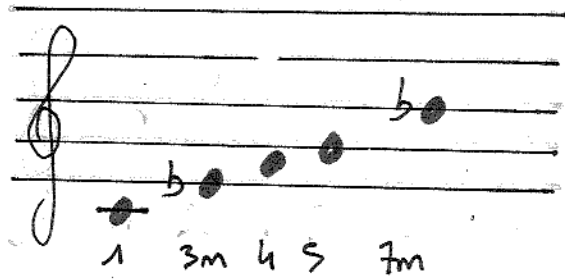
Modes de l'échelle pentatonque:

1,5 - 1 - 1 - 1,5 - 1

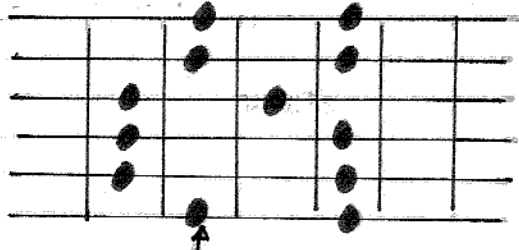
Sans 2^e ni 6^{te}



mode mineur



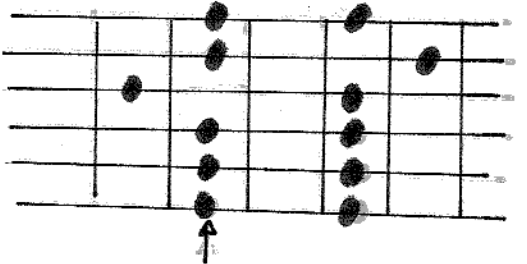
Sans 4^{te} ni 7^e



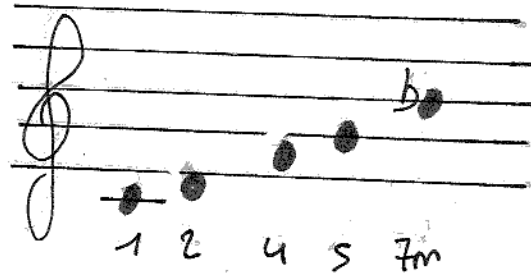
mode majeur



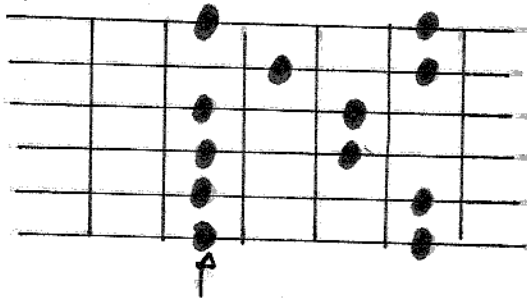
Sans 3^e ni 6^{te}



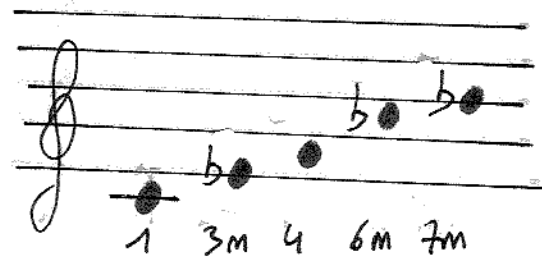
mode neutre



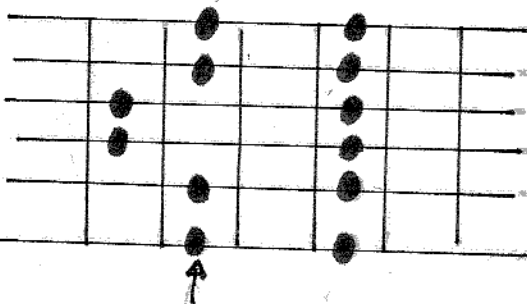
Sans 2^e ni 5^{te}



mode mineur



Sans 3^e ni 7^e



mode neutre

